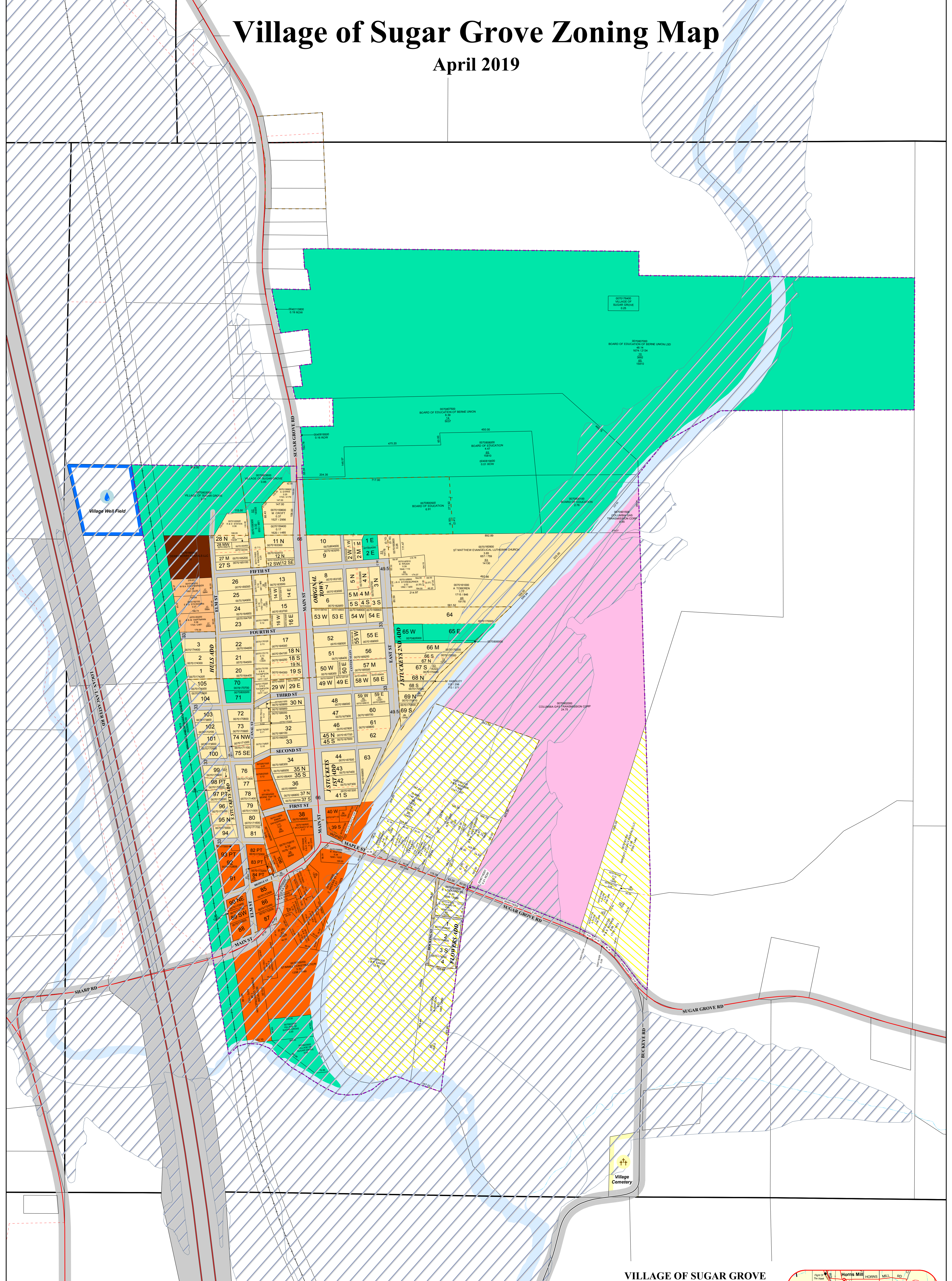
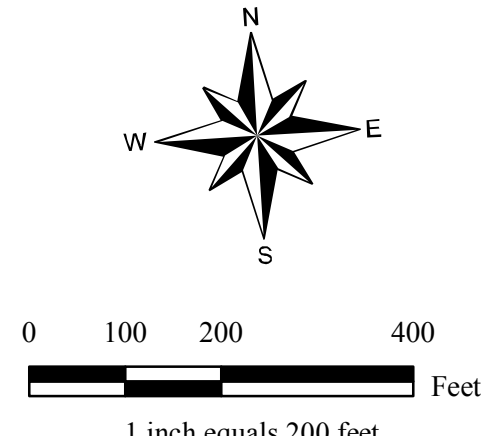


Village of Sugar Grove Zoning Map

April 2019



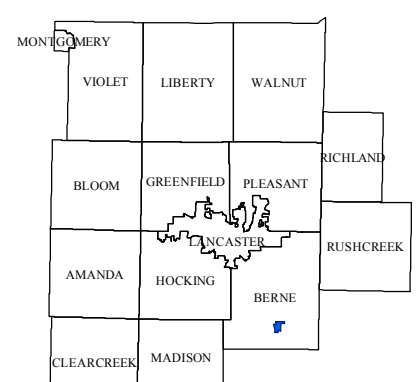
Jon A. Slater, Jr.
 FAIRFIELD COUNTY AUDITOR
 GIS DEPARTMENT
 210 EAST MAIN STREET, RM 105
 LANCASTER, OHIO 43130-3882
 P: (740) 652-7055
 F: (740) 681-5596



LEGEND	
	RR - Rural Residential District
	R-1 - "Old Village" Residential District
	R-2 - "New Village" Residential District
	R-MH - Manufactured Home District
	AR - Apartment Residential District
	VC - Village Center District
	GB - General Business District
	I - Industrial District
	SU - Special Use District
	Flood Plain Overlay District
	Parcel Lines
	Tract Lines
	Vacated Roads
	Subdivision Boundary
	Corporation Boundary

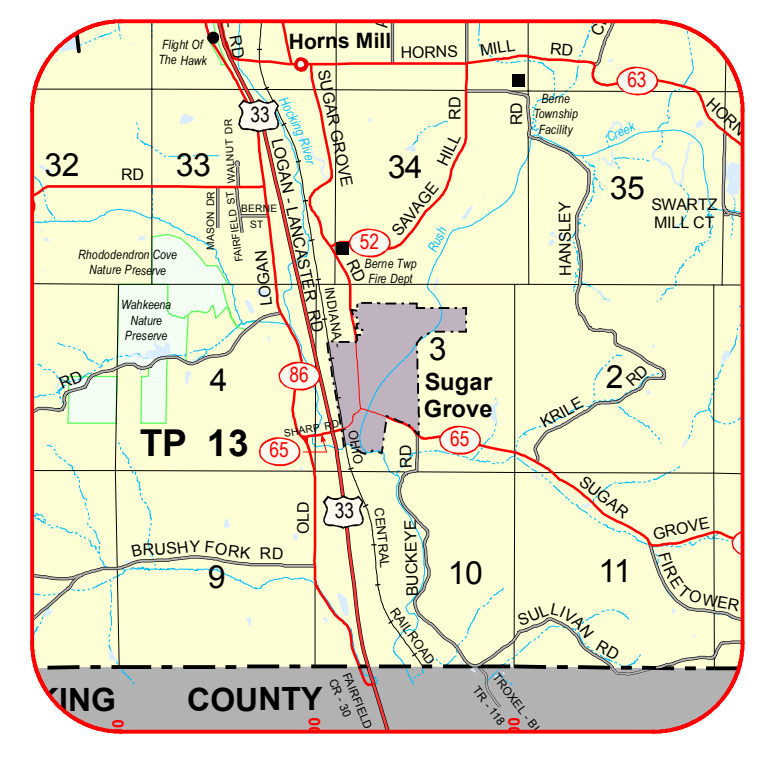
- Zoning Amendments:**
1. Ord 18-2017 Apv. 11/13/17
 2. Ord 14-2018 Apv. 11/05/18
 - 3.
 - 4.
 - 5.

VILLAGE OF SUGAR GROVE FAIRFIELD COUNTY, OHIO



OFFICIAL ZONING DISTRICT MAP

Adopted by the Village Council of the Village of Sugar Grove, Fairfield County Ohio as Ordinance 360-96, passed this 13th day of January, 1997



DISCLAIMER
 All data created by the Fairfield County Auditor. GIS Department has been developed to meet National Map Accuracy Standards. All GIS data layers are referenced to the Ohio State Plane Coordinate System. Horizontal data - North American Datum (NAD83) 83 (95). Vertical data - North American Datum Vertical Datum (NAVD83) Units - Survey Feet.
 All data has been developed from public records that are constantly undergoing change and is not warranted for content, completeness or accuracy. Fairfield County does not warrant, guarantee or represent the data to be fit for a particular use or purpose.
 Please notify the Fairfield County Auditor, GIS Department with any discrepancies.

Produced and Maintained
 by the Fairfield County Auditor
 GIS Department

g:\zoning\SugarGrove_zoning_map.mxd P:\0 Date 03/29/19